

संहती कार्यसाधिका । शिलं परं भूषणम्

Shetkari Shikshan Prasarak Mandal's

KRISHNA MAHAVIDYALAYA, RETHARE BK.

Shivnagar, Tal. Karad, Dist. Satara, 415108 (M.S.) Ph. : 02164-266346, Fax : 02164- 266347

Email : kmr_sspm@yahoo.co.in

Website : www.krishnamahavidyalaya.com

NAAC "B+" Grade (CGPA 2.65)



Founder : **Hon. Jaywantrao Bhosale**

President : **Dr. Suresh Jaywantrao Bhosale**

Principal : **Dr. Salunkhe C. B.**, M.Sc; Ph.D.

Ref. No. : KMR/

Date :

Extended Profile Expenditure Details (Excluding salary) 2021-22

Sr. No.	Particular	Amount
1	Admission fee return	10120
2	Advertisement	59320
3	Affiliation	28360
4	Bank Charges	4029
5	Books and Periodicals	67316
6	Consultancy Fee	15250
7	Environment Sc. Workshop	6934
8	Examination expenses	1570
9	Furniture repairs	1780
10	Garden expenses	8405
11	Gymkhana	30615
12	Gymkhana expenses	28500
13	Hospitality and function	39880
14	I card expenses	12216
15	Library expenses	27240
16	Light Electricity	126040
17	Miscellaneous expenses	76296
18	NCC expenses	18660
19	Printing and stationary	178918



20	Repair and Maintenance	718846
21	Sundry expenses	300
22	Telephone expenses	41575
23	Traveling expenses	51387
24	Water Charges	17526
Total (A)		1571083
1	Salary	67508387
2	Salary allowances	458350
Total (C)		67966737
Grand Total (A+B)		69537820

As per information Explanation
& Documents given to us

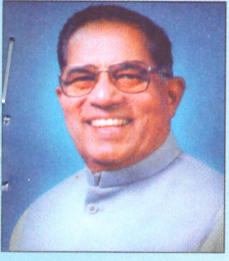
For M/s. J P S S & ASSOCIATES
Chartered Accountants

Pratik

CA. Pratik Anil Joshi
Partner
M. No. 188100



Pratik
PRINCIPAL
KRISHNA MAHAVIDYALAYA, RETHARE BK.
TAL. KARAD - 415 108



संहती कार्यसाधिका । शिलं परं भूषणम्

Shetkari Shikshan Prasarak Mandal's

KRISHNA MAHAVIDYALAYA, RETHARE BK.

Shivnagar, Tal. Karad, Dist. Satara, 415108 (M.S.) Ph. : 02164-266346, Fax : 02164- 266347

Email : kmr_sspm@yahoo.co.in

Website : www.krishnamahavidyalaya.com

NAAC "B+" Grade (CGPA 2.65)



Founder : **Hon. Jaywantrao Bhosale**

President : **Dr. Suresh Jaywantrao Bhosale**

Principal : **Dr. Salunkhe C. B.,** M.Sc; Ph.D.

Ref. No. : KMR/

Date :

Extended Profile Expenditure Details (Excluding salary) 2020-21

Sr. No.	Particular	2020-21
1	Admission fee return	32735
2	Advertisement	2520
3	Affiliation	120400
4	Bank Charges	4609
5	Computer Maintenance	42152
6	Consultancy Fee	30810
7	Fire Gas expenses	5604
8	Garden expenses	14590
9	Gymkhana	131061
10	Lab expenses	259787
11	Light Electricity	99910
12	NCC Camp	5891
13	NSS	79648
14	Postage Charges	80
15	Printing and stationary	75994
16	Reading Room	43072
17	Repair and Maintenance	79801
18	Sundry expenses	70357
19	Telephone expenses	35909
20	Traveling expenses	94588
21	Water Charges	15197



22	Website Charges	44700
Total (A)		1289415
1	Salary	59002112
2	Remuneration	437700
Total (B)		59439812
Grand Total (A+B)		60729227

As per information Explanation
& Documents given to us

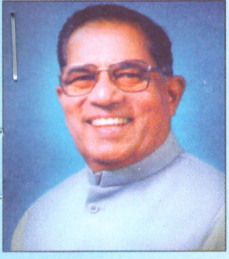
For M/s. J P S S & ASSOCIATES
Chartered Accountants

Pratik

CA. Pratik Anil Joshi
Partner
M. No. 188100



Pratik
PRINCIPAL
KRISHNA MAHAVIDYALAYA, BETHARE BK.
TAL. KARAD - 415 108



संहती कार्यसाधिका । शिलं परं भूषणम्

Shetkari Shikshan Prasarak Mandal's

KRISHNA MAHAVIDYALAYA, RETHARE BK.

Shivnagar, Tal. Karad, Dist. Satara, 415108 (M.S.) Ph. : 02164-266346, Fax : 02164- 266347

Email : kmr_sspm@yahoo.co.in

Website : www.krishnamahavidyalaya.com

NAAC "B+" Grade (CGPA 2.65)



Founder : Hon. Jaywantrao Bhosale

President : Dr. Suresh Jaywantrao Bhosale

Principal : Dr. Salunkhe C. B., M.Sc; Ph.D.

Ref. No. : KMR/

Date :

Extended Profile Expenditure Details (Excluding salary) 2019-20

Sr. No.	Particular	Amount
1	Admission fee return	32595
2	Advertisement	53270
3	Bank Charges	2821
4	Computer Maintenance	3370
5	Consultancy Fee	15500
6	Earn and Learn Scheme Expenses	555
7	Examination expenses	180595
8	Fire Gas expenses	7558
9	Garden expenses	4260
10	Gymkhana expenses	35550
11	Lab expenses	226285
12	Lead College expenses	7500
13	Light Electricity	188540
14	Medical reimbursement	66344
15	Miscellaneous expenses	2170
16	NCC Washing expenses	1435
17	News Paper expenses	3375
18	Postage Charges	132
19	Practical exam expenses	29216



20	Printing and stationary	235437
21	Reading Room	14981
22	Repair and Maintenance	189110
23	Sundry expenses	66687
24	Telephone expenses	44632
25	Traveling expenses	56419
26	Water Charges	15298
27	Wesite Charges	35700
28	Xerox expenses	300
Total (A)		1519635
1	Salary	47523708
2	Honorarium (Salary)	366673
3	Salary allowances	19950
4	Remuneration	223500
Total (B)		48133831
Grand Total (A+B)		49653466

As per information Explanation
& Documents given to us

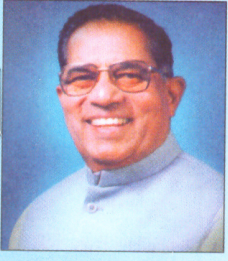
For M/s. J P S S & ASSOCIATES
Chartered Accountants

PA

CA. Pratik Anil Joshi
Partner
M. No. 188100



Pratik Joshi
PRINCIPAL
KRISHNA MAHAVIDYALAYA, RETHARE BK.
TAL. KARAD - 415 108



संहती कार्यसाधिका । शिलं परं भूषणम्

Shetkari Shikshan Prasarak Mandal's

KRISHNA MAHAVIDYALAYA, RETHARE BK.

Shivnagar, Tal. Karad, Dist. Satara, 415108 (M.S.) Ph. : 02164-266346, Fax : 02164- 266347

Email : kmr_sspm@yahoo.co.in

Website : www.krishnamahavidyalaya.com

NAAC "B+" Grade (CGPA 2.65)



Founder : Hon. Jaywantrao Bhosale

President : Dr. Suresh Jaywantrao Bhosale

Principal : Dr. Salunkhe C. B., M.Sc; Ph.D.

Ref. No. : KMR/

Date :

Extended Profile Expenditure Details (Excluding salary) 2018-19

Sr. No.	Particular	Amount
1	Admission fee return	44510
2	Advertisement	19740
3	Affiliation	12220
4	Alcohol technology expenses	250
5	Bank Charges	4902
6	Computer Maintenance	4500
7	Consultancy Fee	26440
8	Examination expenses	34485
9	Fire Gas expenses	5605
10	Garden expenses	17820
11	Gymkhana	33513
12	Gymkhana expenses	27066
13	Jaywant Krida Prabodhani expenses	5948
14	Lab expenses	304771
15	Light Electricity	173900
16	Meeting expenses	5230
17	NCC Camp	25995



18	NCC Washing expenses	12380
19	Postage Charges	1400
20	Printing and stationary	340080
21	Reading Room	18531
22	Repair and Maintenance	265432
23	Sundry expenses	251189
24	Telephone expenses	60715
25	Traveling expenses	65782
26	Water Charges	25251
Total (A)		1787655
1	Salary	46115076
2	Honorarium (Salary)	458494
3	Salary allowances	4500
4	Remuneration	160030
Total (B)		46738100
Grand Total (A+B)		48525755

As per information Explanation
& Documents given to us

For M/s. J P S S & ASSOCIATES
Chartered Accountants

Pa

CA. Pratik Anil Joshi
Partner
M. No. 188100



Pratik Joshi
PRINCIPAL
KRISHNA MAHAVIDYALAYA, RETHARE BK.
TAL. KARAD - 415 108



संहती कार्यसाधिका । शिलं परं भूषणम्

Shetkari Shikshan Prasarak Mandal's

KRISHNA MAHAVIDYALAYA, RETHARE BK.

Shivnagar, Tal. Karad, Dist. Satara, 415108 (M.S.) Ph. : 02164-266346, Fax : 02164- 266347

Email : kmr_sspm@yahoo.co.in

Website : www.krishnamahavidyalaya.com

NAAC "B+" Grade (CGPA 2.65)



Founder : **Hon. Jaywantrao Bhosale**

President : **Dr. Suresh Jaywantrao Bhosale**

Principal : **Dr. Salunkhe C. B.,** M.Sc; Ph.D.

Ref. No. : KMR/

Date :

Extended Profile Expenditure Details (Excluding salary) 2017-18

Sr. No.	Particular	Amount
1	Admission fee return	38725
2	Advertisement	8000
3	Affiliation	15800
4	Bank Charges	5292
5	Books and Periodicals	54801
6	Computer Maintenance	74284
7	Earn and Learn Scheme Expenses	9280
8	Environment Sc. Study Material	13125
9	Examination expenses	79123
10	Garden expenses	11100
11	Gymkhana expenses	51614
12	Lab expenses	276571
13	Light Electricity	162910
14	Medical reimbursement	160724
15	Meeting expenses	6560
16	NSS	7890
17	Postage Charges	480
18	Printing and stationary	285623
19	Reading Room	17937
20	Repair and Maintenance	487606
21	Sundry expenses	124603
22	Telephone expenses	51814
23	Traveling expenses	56178
24	Water Charges	6358
Total (A)		2006398
1	Salary	44776132
2	Salary allowances	42000
3	Remuneration	32200
Total (B)		44850332
Grand Total (A+B)		46856730

As per information Explanation
& Documents given to us

For M/s. J P S S & ASSOCIATES
Chartered Accountants

Pratik Anil Joshi

CA. Pratik Anil Joshi
Partner
M. No. 188100



Dr. Salunkhe C. B.

PRINCIPAL
KRISHNA MAHAVIDYALAYA, RETHARE
TAL. KARAD - 415 108